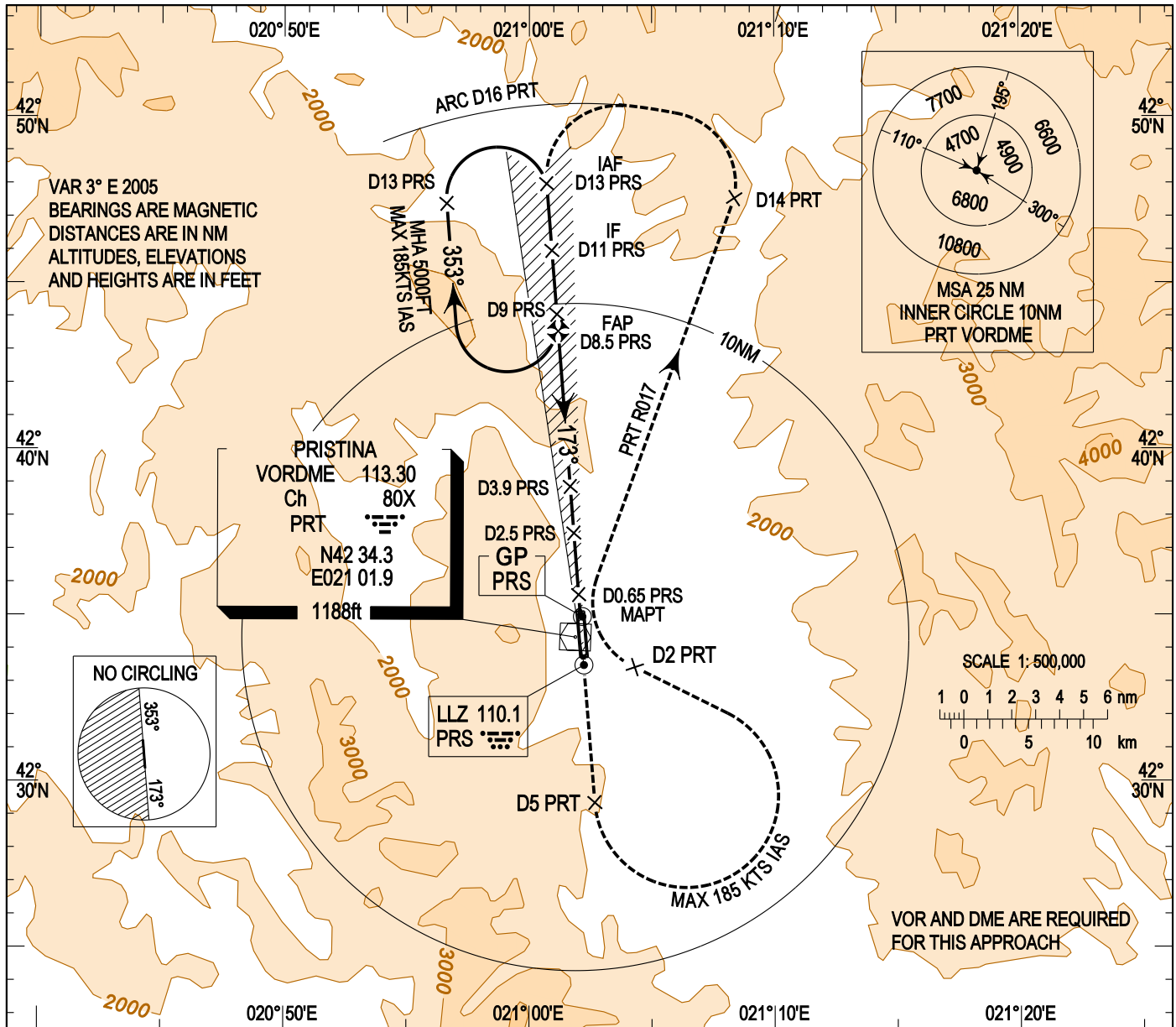


INSTRUMENT APPROACH CHART - ICAO

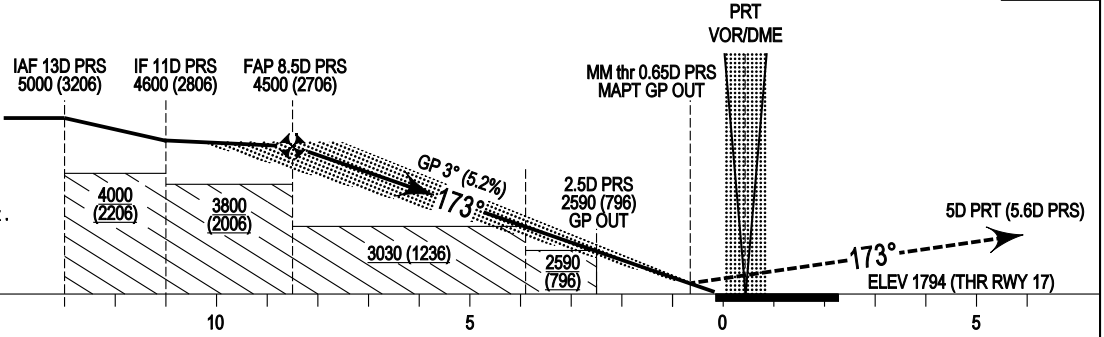
AERODROME ELEV. 1794FT
 HEIGHTS RELATED TO
 THR RWY 17 - ELEV 1794FT

APP 118.775
 228.125
 TWR 122.10
 227.8

PRISTINA
 ILS/DME
 RWY 17



MISSED APPROACH PROCEDURE
 MAPT(MAPT (M) PRS 0.65D GP OUT)
 Climb straight ahead to 5000 on track 173°M outbound to D5 PRT. Turn left (Max 185 kts IAS) to VOR/DME PRT. At D2 PRT turn right onto PRT R017 and continue to climb. At D14 turn left onto PRT D16 Arc. Crossing PRT R001 turn left to join PRS LLZ not below 5000ft. Hold between 9D and 13D towards PRS LLZ/DME with right turns.



DME PRS reads D0.16 at THR Rwy 17

OCA(H)	A	B	C	D	ILS GP 3° / 5.24° (GP OUT 318.61 FT/NM)														
					DME PRT	10D	9D	8D	7D	6D	5D	4D	3D	2D	GS KTS	160	170	180	
ILS CAT I	1994 (200)	2006 (212)	2014 (220)	2025 (231)															
ILS CAT II	1880 (86)	1900 (106)	1910 (116)	1920 (126)	GP ALT (HT)	4980 (3186)	4660 (2866)	4340 (2546)	4020 (2226)	3700 (1906)	3380 (1586)	3060 (1266)	2750 (958)	2430 (636)					
GP OUT	227(476)					70	80	90	100	110	120	130	140	150	160	170	180		
CIRCLING*	2280 (486)	2420 (626)	2820 (1026)		FT / MIN	370	420	480	530	580	640	690	740	800	850	900	960		

*EAST OF RWY 17/35 AND HJ

CHANGE: New Chart