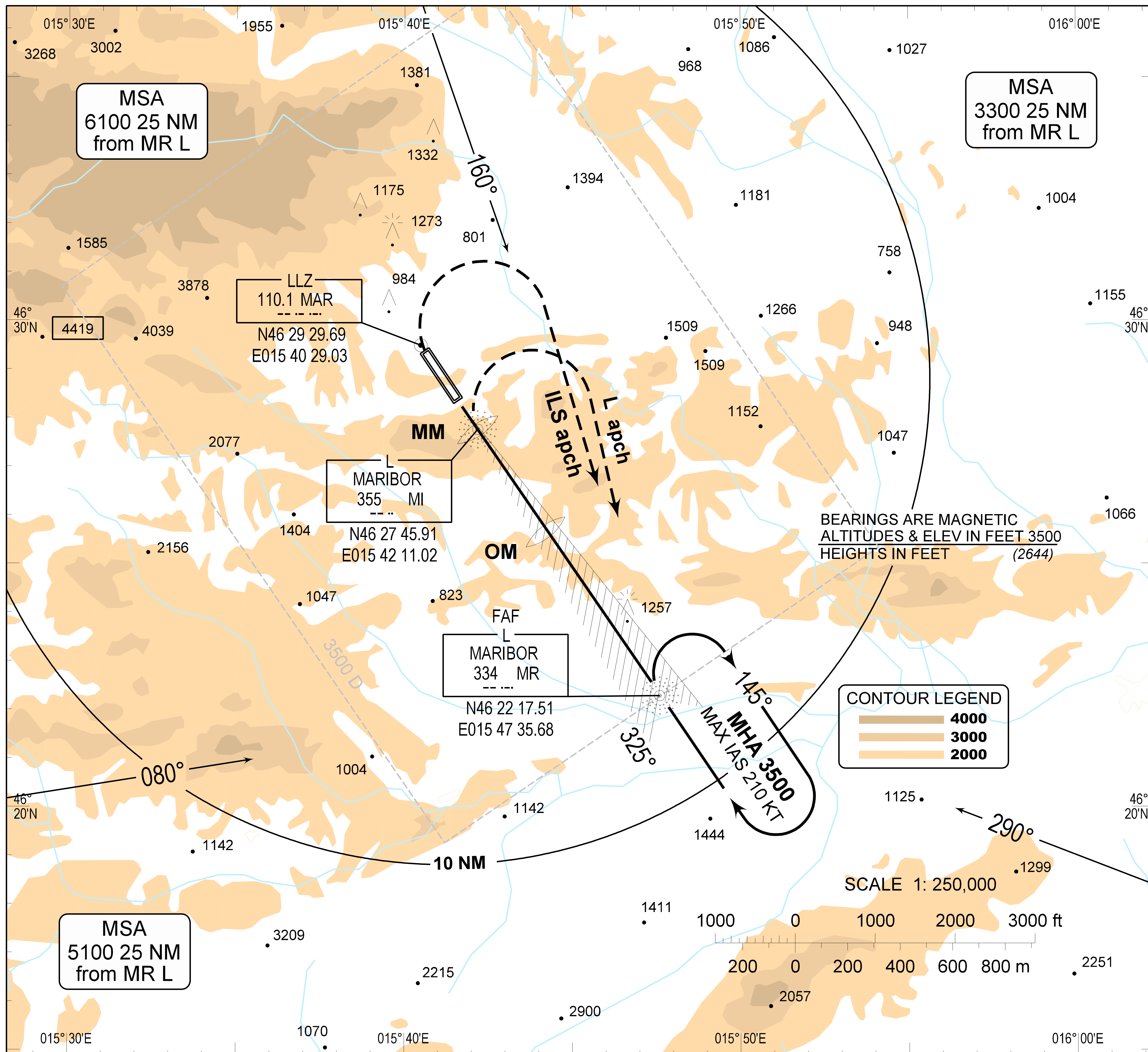


INSTRUMENT APPROACH CHART - ICAO

AD ELEV 876 FT
 HEIGHTS RELATED TO THR RWY 33 ELEV 856 FT
VAR 1.0° E

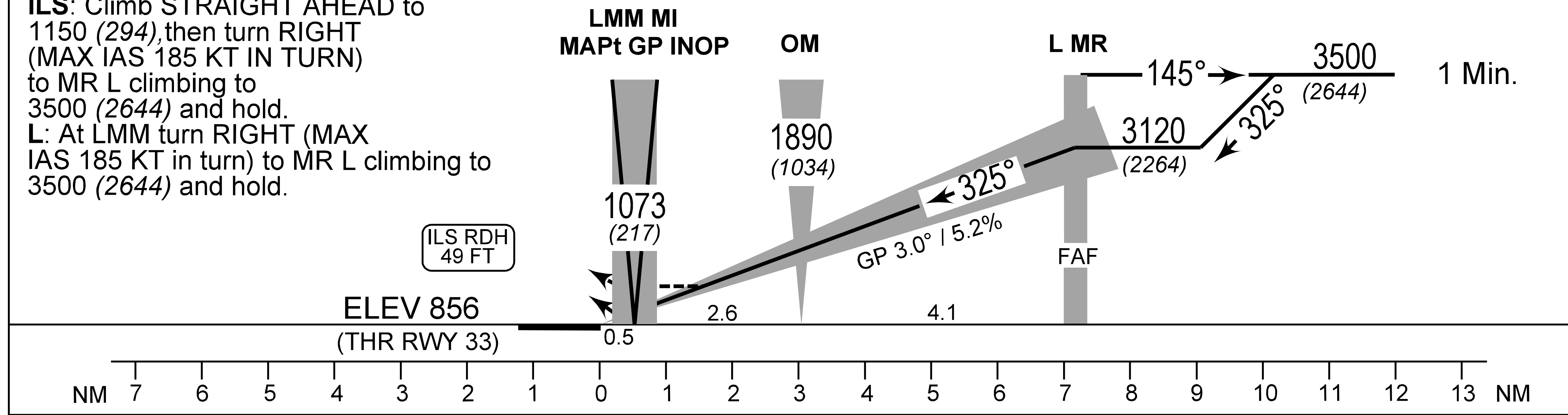
APP 119.200
 TOWER 119.200

MARIBOR, Maribor SLOVENIA
ILS RWY 33
LOCATOR RWY 33



TA 10500

MISSED APPROACH:
ILS: Climb STRAIGHT AHEAD to 1150 (294), then turn RIGHT (MAX IAS 185 KT IN TURN) to MR L climbing to 3500 (2644) and hold.
L: At LMM turn RIGHT (MAX IAS 185 KT in turn) to MR L climbing to 3500 (2644) and hold.



OCA(H)		A	B	C	D
Straight - in Approach	ILS CAT I	994 (138)	1004 (148)	1014 (158)	1027 (171)
	GP INOP	1148 (292)			
	Locator	1198 (342)			
Circling		1280 (404)	1570 (694)	1830 (954)	2000(1124)

Circling SW of aerodrome not authorized.

LLZ (GP INOP) approach: MAPt at LMM							
ADVISORY INFORMATION ONLY							
GS (KT)	70	90	100	120	140	160	180
MIN:SEC	—	—	—	—	—	—	—
FT/MIN	377	484	538	646	753	861	969

Not for resale or commercial use | .../dps/LJMB_6-1/LJMB_6-1.D08 5/30/2008 2:31:54 PM